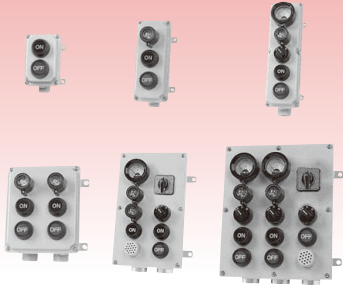


ZE·ZS Series overview

ZE wall-mounted type



ZS stand type

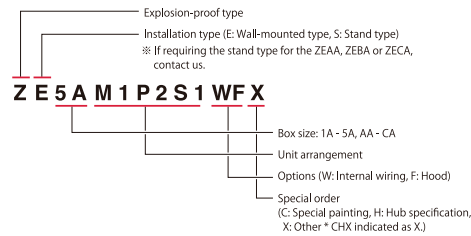


■ Features

- 1) Applicable with Zones 1 and 2
- 2) Exde II CT5 explosion-proof construction. Can be used with hydrogen, acetylene and carbon disulfide.
- 3) Dust- and spray-proof construction equal to IP65 protection
- 4) Housed in a stainless steel box that stands up to corrosion and weather. Waterproof construction contents for use outdoors.
- 5) High brightness LEDs used for indicator lights because they are bright and easy to see. Long-lasting and maintenance-free.
- 6) Large push-button switches that are easy to operate.
- 7) Boxes come with hinges to facilitate wiring work, checks and maintenance.

■ Information required for orders

- 1) Control box model no.



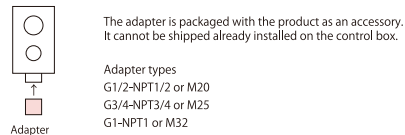
- 2) Installation unit specifications (For details, see p.31 - 38.)

3) Cable entry specifications

•Wall-mounted type: Select cable entry specifications from the below table. For cable wiring, select a cable gland model from p.51 - 52. However, the cable gland is provided as an accessory.

Box size	Standard cable entry specifications	
	Hub size	Hub location
ZE2A	G3/4 or G1/2	1 on bottom
ZE3A	G3/4 or G1/2	1 on bottom
ZE5A	G3/4 or G1	1 on bottom
ZE6A	G3/4 or G1/2	2 on bottom
ZEAA	G1	2 on bottom
ZEBA	G1	3 on bottom
ZECA	G1	4 on bottom

※Optional adapters work with NPT and M threads.



•Stand type: Specify the cable outer diameter. One(1) cable can enter.

Applicable cable outer diameter is within Ø8.8 - 20.

The stand type is designed only for cable connection and the external cable port is fitted with packing.

■ Installation and connection work

- Wiring connections require either cabling and/or conduit work.
- With the stand type, use usually available foundation bolts.

■ Precautions for use

In normal use, these control boxes can stand up to corrosion. However if used in places where exposed to salty air or other adverse conditions, rusting and other issues may occur in a short period of time. In such case, please contact us before purchasing.

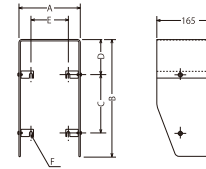
■ Construction of main parts

- Box: Stainless steel sheet
- Tightening bolts: Stainless steel
- Stand pole: Thick steel electrical conduit
- Stand base: Aluminum alloy
- Coating: Baked-on melamine resin (Only the outside is coated for 2-6 units control boxes.)
- Color: S17/1

■ Optional Parts and Special Order Specifications

● Hood

- Stainless steel
- Standard: no paint
- Special Order: painted with specified color



● Internal Wiring

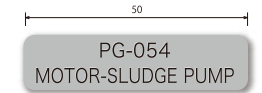
- Internal terminal block is provided as well as standard wiring between units and the terminal block.
- For special units arrangement and wiring, please contact us.
- Control boxes with internal wiring are not the same as those without internal wiring. Thus, terminal blocks cannot be added at customer's side.

Max. internal terminals

ZE1A	—
ZE(S)2A	4P
ZE(S)3A	8P
ZE(S)5A	12P
ZE(S)6A	16P
ZEAA	24P
ZEBA	36P
ZECA	64P

● Name Plate

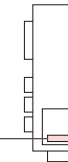
- Model no. N5012HA
- Acrylic, t2 thick, adhesive type
- Black letters etched from backside on white background
- Round gothic font (Character limit applies.)
- ※Stainless steel name plate is also available as a special order.



● Manufacture Label

- Standard: Tetoron® Film
- Special Order: Stainless steel

* For repeat orders, provide the 6-digit serial No.



Type	A	B	C	D	E	F	Applicable models
FG2	150	200	100	59.5	95	4-φ7	ZE2A/ZS2A
FG3	150	295	150	84.5	95	4-φ7	ZE3A/ZS3A
FG5	150	400	250	84.5	95	4-φ7	ZE5A/ZS5A
FG6	265	290	180	64.5	210	4-φ10	ZE6A/ZS6A

- * Can also be manufactured for the ZE1A as a customized product.
- * Stand types (ZS) cannot be retrofitted with a hood. Specify a hood when placing your order.

● Internal Terminal Block

- Rating: 500 V, 25 A
- Max. connectable wire gauge: 3.5 mm²
- Terminal screw: M4 x 10



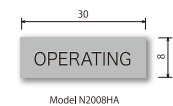
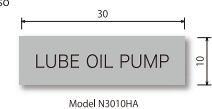
● Wire Mark (Special Order)

- For control boxes with internal wiring, wire mark can be provided as a special order.



● Unite Name Plate

- Acrylic, t2 thick, adhesive type
- Black letters etched from backside on white background
- Round gothic font (with letter limit)
- ※Stainless steel name plate is also available as a special order.



● Tropical Treatment (Special Order)

- Unit terminal screws are changed to stainless steel screws.

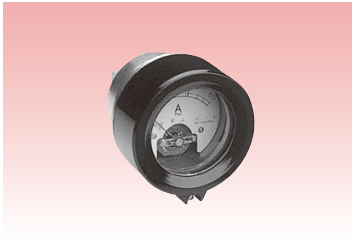
Products conforming to the international standard (IEC Standard 60079)

Type of protection
ExdeIICT5

Specifications of units ● Individual sale of these units is only for maintenance purpose.

Ammeter symbol M

ZEMU (AC Ammeter)



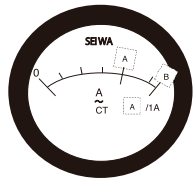
Weight : 440g

Class : 2.5 class
 Direct current graduation : 15A, 10A, 5A, 3A, 1A
 CT correspondence current graduation : 3A, 5A, 10A, 15A, 20A, 30A, 40A,
 50A, 60A, 75A, 100A, 150A
 CT secondary current : 5A, 1A
 Extension scale : x3 (standard) , x2 (special)
 Demand : 1.3VA (5A) 0.9VA (1A)

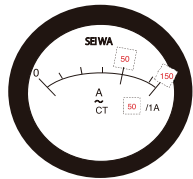
- Please Specify
- 1) Extension scale (x3 or x2)
 - 2) CT Ratio
 - 3) Red Needle provided (special) / not provided (standard)

CONFIRMATION SHEET FOR AMMETER (AC)

[Example 1 : AC ammeter 3-Fold 50/1A · w/o Red needle]



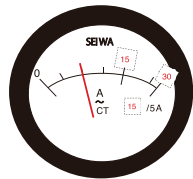
Type	■Explosion-proof
Extended Scale	<input type="checkbox"/> 3-Fold <input type="checkbox"/> 2-Fold
Red Needle	<input type="checkbox"/> NOT provided <input type="checkbox"/> Provided
CT Ratio(A)	/
A	
B	



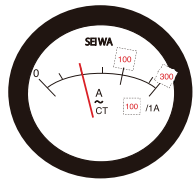
Type	■Explosion-proof
Extended Scale	■3-Fold <input type="checkbox"/> 2-Fold
Red Needle	■NOT provided <input type="checkbox"/> Provided
CT Ratio(A)	50 / 1
A	50
B	150

[Example 2 : AC ammeter 2-Fold 15/5A · with Red needle]

[Example 3 : AC ammeter 3-Fold 100/1A · with Red needle]



Type	■Explosion-proof
Extended Scale	<input type="checkbox"/> 3-Fold ■2-Fold
Red Needle	<input type="checkbox"/> NOT provided ■Provided
CT Ratio(A)	15 / 5
A	15
B	30



Type	■Explosion-proof
Extended Scale	■3-Fold <input type="checkbox"/> 2-Fold
Red Needle	<input type="checkbox"/> NOT provided ■Provided
CT Ratio(A)	100 / 1
A	100
B	300

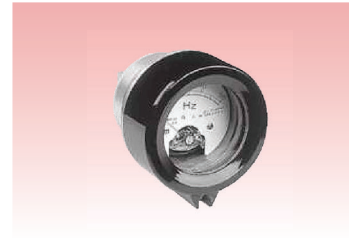
Products conforming to the international standard (IEC Standard 60079)

Type of protection
ExdeIICT5

Specifications of units ● Individual sale of these units is only for maintenance purpose.

Ammeter symbol M

ZEMU (DC Ammeter)



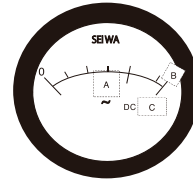
Weight : 440g

Class : 2.5 class
 Input current : DC 4-20mA^{※1}
 Scale : 0-50A, 0-100rpm, 0-60Hz, 0-100%, etc.
 ※1 We can prepare Input current DC 0-1 A , and Input voltage 0-10 V.

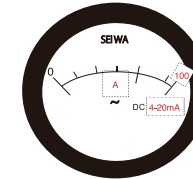
- Please Specify
- 1) Input current
 - 2) Scale
 - 3) Red Needle provided (special) / not provided (standard)

CONFIRMATION SHEET FOR AMMETER (DC)

[Example 1 : DC ammeter
Input :DC4-20mA · Scale 0-100A · w/o Red needle]



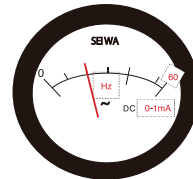
Type	■Explosion-proof
Input(C)	<input type="checkbox"/> DC 4 - 20mA <input type="checkbox"/> DC 0 - 1mA <input type="checkbox"/> DC 0 - 10V
Red Needle	<input type="checkbox"/> NOT provided <input type="checkbox"/> Provided
Scale	0 -
A (=Unit)	
B (=Range)	



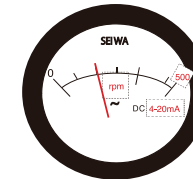
Type	■Explosion-proof
Input(C)	■DC 4 - 20mA <input type="checkbox"/> DC 0 - 1mA <input type="checkbox"/> DC 0 - 10V
Red Needle	■NOT provided <input type="checkbox"/> Provided
Scale	0 - 100
A (=Unit)	A
B (=Range)	100

[Example 2 : DC ammeter (Frequency meter)
Input :DC0-1mA · Scale 0-60Hz · with Red needle]

[Example 3 : DC ammeter (RPM meter)
Input :DC4-20mA · Scale 0-500rpm · with Red needle]



Type	■Explosion-proof
Input(C)	<input type="checkbox"/> DC 4 - 20mA ■DC 0 - 1mA <input type="checkbox"/> DC 0 - 10V
Red Needle	<input type="checkbox"/> NOT provided ■Provided
Scale	0 - 60
A (=Unit)	Hz
B (=Range)	60



Type	■Explosion-proof
Input(C)	■DC 4 - 20mA <input type="checkbox"/> DC 0 - 1mA <input type="checkbox"/> DC 0 - 10V
Red Needle	<input type="checkbox"/> NOT provided ■Provided
Scale	0 - 500
A (=Unit)	rpm
B (=Range)	500

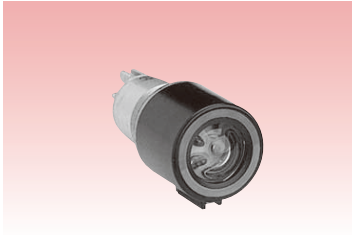
Products conforming to the international standard (IEC Standard 60079)

Type of protection
ExdeIICT5

Specifications of units ● Individual sale of these units is only for maintenance purpose.

Pilot Lamp symbol

ZELU



Weight : 250g

Light Source : LED
Demand : 1.8VA

Catalog No.	Transformer Primary Voltage	LED color		
		red	green	orange
	100/110V AC 50/60Hz	ZELU-1R	ZELU-1G	ZELU-1O
	200/220V AC 50/60Hz	ZELU-2R	ZELU-2G	ZELU-2O
	24V AC-DC (no trans)	ZELU-3R	ZELU-3G	ZELU-3O

Caution

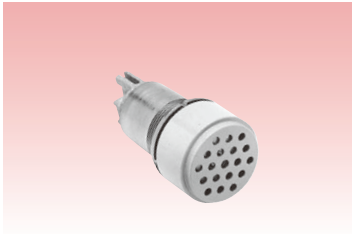
- The front globe is made of glass. Be careful not to give a strong impact on it, otherwise it might break.
- Due to the low input current, the lamp can be lit on dark current even when the power switch is off.

● Please Specify

- 1) Voltage (110V AC / 220V AC / 24V)
- 2) Color (Red / Green / Orange)

Buzzer symbol

ZEZU



Weight : 330g

Rated voltage : 110V AC, 220V AC 50/60Hz 18VA
Rated buzzing time : 10 min.
Sound level : 85 db

Products for 24V AC or DC are not available.

Catalog No.	ZEZU-1	ZEZU-2
Rated Vol.	110VAC	220VAC

● Please Specify

- 1) Voltage (110V AC or 220V AC)

Products conforming to the international standard (IEC Standard 60079)

Type of protection
ExdeIICT5

Specifications of units ● Individual sale of these units is only for maintenance purpose.

Selector Switch symbol

ZESU



Weight : 190g

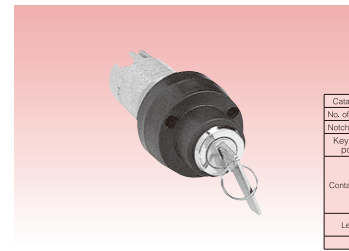
Rating : 500V AC 3A, 220V DC 0.3A
● Please Specify 1) Catalog No.
2) Letter

Catalog No.	ZESU-12	ZESU-12S	ZESU-13	ZESU-2
No. of notches	2	2	3	2
Notch position				
Contact type				
Letter	OFF / ON MAN / AUTO	MAN / AUTO	MAN / OFF / AUTO	OFF / ON
Color of pointer	White	White	Red	Yellow
Use	changeover, 3-way, single-pole	overlap	changeover, single-pole	double-pole

Legends other than the above can be supplied.

Keyed Selector Switch (supplied to order) symbol

ZEKU



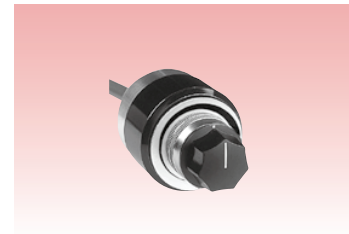
Weight : 240g

Rating : 500V AC 3A, 220V DC 0.3A
Key No. : SO1 (standard)
• Different key No. is also available.
● Please Specify 1) Catalog No.
2) Letter

Catalog No.	ZEKU-12R	ZEKU-12L	ZEKU-12LR	ZEKU-12RS	ZEKU-12LS	ZEKU-12RS	ZEKU-12L	ZEKU-12C	ZEKU-12LR	ZEKU-2R	ZEKU-2L	ZEKU-2RL
No. of notches	2	2	2	2	2	2	2	3	3	2	2	2
Notch position												
Key release position	Right	Left	Right & Left	Right	Left	Right & Left	Right	Left	Center	Right & Left	Right	Left
Contact Type												
Letter	OFF / ON MAN / AUTO	OFF / ON MAN / AUTO	MAN / AUTO	MAN / AUTO	MAN / AUTO	MAN / AUTO	MAN / OFF / AUTO	MAN / OFF / AUTO	MAN / OFF / AUTO	OFF / ON	OFF / ON	OFF / ON
Use	changeover, 3-way, single-pole	changeover, 3-way, single-pole	changeover, 3-way, single-pole	overlap	overlap	overlap	changeover, single-pole	changeover, single-pole	changeover, single-pole	double-pole	double-pole	double-pole

Potentiometer symbol

ZEZU



Weight : 450g

Model: ZEZU

Resistance Variance: Linear

Rated Power: 2.5W 1 kΩ (Withstands 500 V AC for 1 min)
* For ratings other than 1 kΩ, contact us.

Hard-wired Specification: Red wire Black wire
White wire CW

ZE-Z5

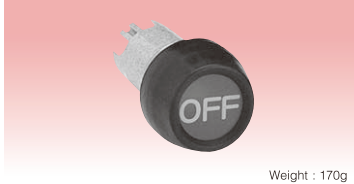
Products conforming to the international standard (IEC Standard 60079)

Type of protection
ExdeIICT5

Specifications of units ● Individual sale of these units is only for maintenance purpose.

Momentary Type Pushbutton Switch symbol (P)

ZEPU



Weight : 170g

Contact : 1a1b or 2a
Color : Black / Red / Green Other colors are available,(special order)
Letter : ON / OFF / START / STOP / FOR / REV Other letters are available.

- Please Specify
1) Contact 2) Color 3) Letter

Pin-lock Type Pushbutton Switch symbol (P)

ZEPU-L



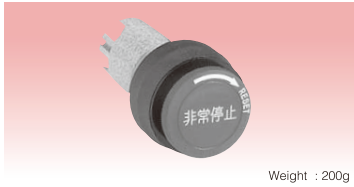
Weight : 210g

Contact : 1a1b or 2a
Color : Red / Green
Letter : OFF / STOP Other letters are available.

- Please Specify
1) Contact 2) Color 3) Letter

Push-lock Type Pushbutton Switch symbol (P)

ZEPU-E



Weight : 200g

Contact : 1a1b or 2a
Color : Red / Green
Letter : EMERGENCY STOP / STOP Other letters are available.

- Please Specify
1) Contact 2) Color 3) Letter

Switch rating: 500 V AC, 3 A; 220 V DC, 0.3 A (coil load)

Rated voltage and current	AC			DC		
	Rated voltage (V)	Rated current (A)		Rated voltage (V)	Rated current (A)	
		15 AC (Coil load)	12 AC (Resistance load)		13 DC (Coil load)	12 DC (Resistance load)
110	8	10	110	1	3.5	
220	5	10	220	0.3	1.5	
440	3	6	—	—	—	
Rated insulation voltage	AC,DC 500V					

Products conforming to the international standard (IEC Standard 60079)

Type of protection
ExdeIICT5

Specifications of units ● Individual sale of these units is only for maintenance purpose.

Optional Accessories for Push Button

Fail safe Guard · Aluminum alloy with black coating



for ZEPU



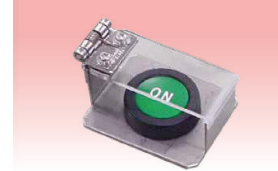
for ZEPU-L



for ZEPU-E

Fail safe Cover (For the ZEPU and ZEPU-E)

Acrylic



Stainless steel



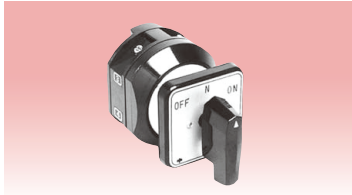
Products conforming to the international standard (IEC Standard 60079)

Type of protection
ExdeIICT5

Specifications of units ● Individual sale of these units is only for maintenance purpose.

Cam-operated Switch (supplied to order) symbol

EC-10



Weight : 460g

Rating : 500V AC, 10A

● Please Specify

- 1) Contact No. (Please refer the below table.)
- 2) Letter

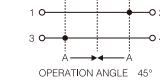
• Consult us for other types of contact configuration (ON, OFF).

CAM SWITCH CONTACT ARRANGEMENT

OPERATION ANGLE 90°	OPERATION ANGLE 45°	OPERATION ANGLE 45°	OPERATION ANGLE 45°
OPERATION ANGLE 45°	OPERATION ANGLE 90°	OPERATION ANGLE 90°	OPERATION ANGLE 90°
OPERATION ANGLE 90°	OPERATION ANGLE 45°	OPERATION ANGLE 45°	OPERATION ANGLE 45°
OPERATION ANGLE 45°	OPERATION ANGLE 45°	OPERATION ANGLE 45°	OPERATION ANGLE 45°
OPERATION ANGLE 45°	OPERATION ANGLE 45°	OPERATION ANGLE 45°	OPERATION ANGLE 45°
OPERATION ANGLE From the left side 45°	OPERATION ANGLE From the left side 45°	OPERATION ANGLE From the left side 45°	OPERATION ANGLE 30°

An example CONTACT NO.

1302
 Consecutive numbers
 Number of notches
 Number of contact blocks



The arrows → or ← represent that the knob automatically returns to the direction of the arrows.

Products conforming to the international standard (IEC Standard 60079)

Type of protection
ExdeIICT5

Specifications of units ● Individual sale of these units is only for maintenance purpose.

Optional Spec

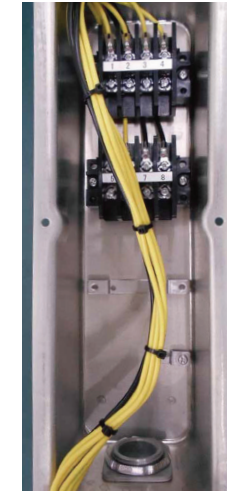
Internal Wiring (example)

Transition Wiring Only



■ In this case, the customer's scope of wiring work is up to each unit.

Connection + Terminal Blocks



■ In this case, the customer's wiring scope is up to the terminal block.

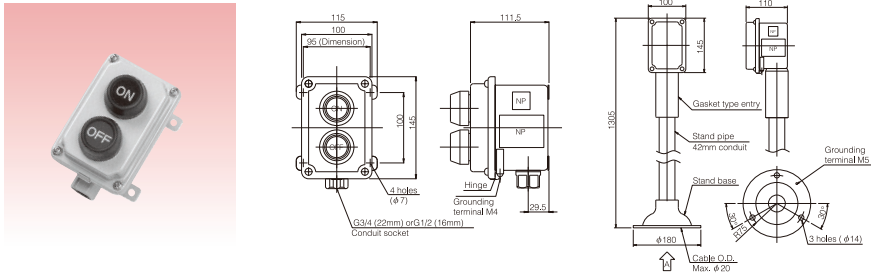
Explosion Proof Type Control Boxes

SEIWA

Products conforming to the international standard (IEC Standard 60079)

Combination of 1 or 2 units

Type of protection: Exde/ICT5
Degree of Protection: IP 65



Unit arrangement	1		2		3		4		5	
Connection	RL 1-2		ON 1-2 OFF 3-4		OFF 1-2 ON 3-4		EMERGENCY STOP 1-2 ON 3-4 OFF 5-6		MANU AUTO 1-2 ON 3-4 OFF 5-6	
Provision of wiring	no	yes	no	yes	no	yes	no	yes	no	yes
Wall-mounted type	ZE2AL1	ZE2AL1W	ZE2AP1	ZE2AP1W	ZE2AP1	ZE2AP1W	ZE2AP1	ZE2AP1W	ZE2AS1	ZE2AS1W
Stand type	ZS2AL1	ZS2AL1W	ZS2AP1	ZS2AP1W	ZS2AP1	ZS2AP1W	ZS2AP1	ZS2AP1W	ZS2AS1	ZS2AS1W
Unit arrangement	6		7		8		9		10	
Connection	1-2		1-M-2		RL 1-2 ON 3-4 OFF 5-6		ON 1-2 OFF 3-4 ON 5-6 OFF 7-8		RL 1-2 ON 3-4 OFF 5-6	
Provision of wiring	no	yes	no	yes	no	yes	no	yes	no	yes
Wall-mounted type	ZE2AZ1	ZE2AZ1W	ZE2AM1	ZE2AM1W	ZE2AL2	ZE2AL2W	ZE2AP2	ZE2AP2W	ZE2AL1P1	ZE2AL1P1W
Stand type	ZS2AZ1	ZS2AZ1W	ZS2AM1	ZS2AM1W	ZS2AL2	ZS2AL2W	ZS2AP2	ZS2AP2W	ZS2AL1P1	ZS2AL1P1W
Unit arrangement	11		12		13		14		15	
Connection	RL 1-2 OFF ON 3-4		OFF ON 1-2 ON 3-4 OFF ON 5-6		1-2 ON 3-4		RL 1-2 ON 3-4		OFF ON 1-2 ON 3-4 OFF ON 5-6	
Provision of wiring	no	yes	no	yes	no	yes	no	yes	no	yes
Wall-mounted type	ZE2AL1S1	ZE2AL1S1W	ZE2AS2	ZE2AS2W	ZE2AZ1P1	ZE2AZ1P1W	ZE2AL1Z1	ZE2AL1Z1W	ZE2AS1P1	ZE2AS1P1W
Stand type	ZS2AL1S1	ZS2AL1S1W	ZS2AS2	ZS2AS2W	ZS2AZ1P1	ZS2AZ1P1W	ZS2AL1Z1	ZS2AL1Z1W	ZS2AS1P1	ZS2AS1P1W

Mass : max.1.1kg (ZE2AL2)

(M).....Ammeter (L).....Pilot lamp (S).....Selector switch (P).....Pushbutton switch (Z).....Buzzer

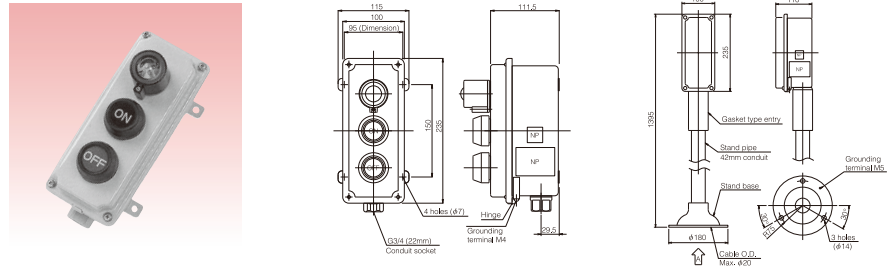
Explosion Proof Type Control Boxes

SEIWA

Products conforming to the international standard (IEC Standard 60079)

Combination of 3 units

Type of protection: Exde/ICT5
Degree of Protection: IP 65



Unit arrangement	1		2		3		4	
Connection	1-2 3-4 5-6		RL 1-2 ON 3-4 OFF 5-6		FOR 1-2 3-4 5-6 STOP ON OFF		Extra instructions	
Provision of wiring	no	yes	no	yes	no	yes	no	yes
Wall-mounted type	ZE3AL3	ZE3AL3W	ZE3AL1P2	ZE3AL1P2W	ZE3AP3	ZE3AP3W	ZE3AC1	ZE3AC1W
Stand type	ZS3AL3	ZS3AL3W	ZS3AL1P2	ZS3AL1P2W	ZS3AP3	ZS3AP3W	ZS3AC1	ZS3AC1W
Unit arrangement	5		6		7		8	
Connection	MANU AUTO 1-2 ON 3-4 OFF 5-6		Extra instructions		Extra instructions		OFF ON 1-2 ON 3-4 OFF ON 5-6	
Provision of wiring	no	yes	no	yes	no	yes	no	yes
Wall-mounted type	ZE3AS1P2	ZE3AS1P2W	ZE3AM1L1S1	ZE3AM1L1S1W	ZE3AM1C1	ZE3AM1C1W	ZE3AS3	ZE3AS3W
Stand type	ZS3AS1P2	ZS3AS1P2W	ZS3AM1L1S1	ZS3AM1L1S1W	ZS3AM1C1	ZS3AM1C1W	ZS3AS3	ZS3AS3W
Unit arrangement	9		10		11		12	
Connection	1-2 3-4 5-6		RL 1-2 ON 3-4 OFF 5-6		Extra instructions		Extra instructions	
Provision of wiring	no	yes	no	yes	no	yes	no	yes
Wall-mounted type	ZE3AZ1L1P1	ZE3AZ1L1P1W	ZE3AM1P2	ZE3AM1P2W	ZE3AL1C1	ZE3AL1C1W	ZE3AL1P1S1	ZE3AL1P1S1W
Stand type	ZS3AZ1L1P1	ZS3AZ1L1P1W	ZS3AM1P2	ZS3AM1P2W	ZS3AL1C1	ZS3AL1C1W	ZS3AL1P1S1	ZS3AL1P1S1W

Mass : max.1.9kg (ZE3AM1L1S1)

(M).....Ammeter (L).....Pilot lamp (S).....Selector switch (P).....Pushbutton switch (Z).....Buzzer (C).....Cam-operated switch

ZE-ZS

Explosion Proof Type Control Boxes

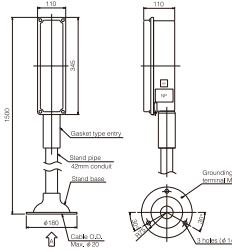
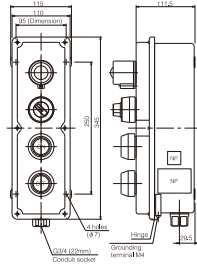
SEIWA

Products conforming to the international standard (IEC Standard 60079)

Combination of 4 units

Type of protection
ExdeIICT6

Degree of Protection
IP 65



Unit arrangement	1		2		3		4	
Connection								
Provision of wiring	no	yes	no	yes	no	yes	no	yes
Wall-mounted type	ZE5AL2P2	ZE5AL2P2W	ZE5AL1S1P2	ZE5AL1S1P2W	ZE5AS1P3	ZE5AS1P3W	ZE5AS4	ZE5AS4W
Stand type	ZS5AL2P2	ZS5AL2P2W	ZS5AL1S1P2	ZS5AL1S1P2W	ZS5AS1P3	ZS5AS1P3W	ZS5AS4	ZS5AS4W

Unit arrangement	5		6		7		8	
Connection								
Provision of wiring	no	yes	no	yes	no	yes	no	yes
Wall-mounted type	ZE5AM1L1P2	ZE5AM1L1P2W	ZE5AP4	ZE5AP4W	ZE5AL4	ZE5AL4W	ZE5AZ1L1P2	ZE5AZ1L1P2W
Stand type	ZS5AM1L1P2	ZS5AM1L1P2W	ZS5AP4	ZS5AP4W	ZS5AL4	ZS5AL4W	ZS5AZ1L1P2	ZS5AZ1L1P2W

Mass : max.2.7kg (ZE5AM1L1P2)

(M).....Ammeter (L).....Pilot lamp (S).....Selector switch (P).....Pushbutton switch (Z).....Buzzer (C).....Cam-operated switch

Explosion Proof Type Control Boxes

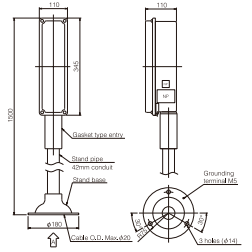
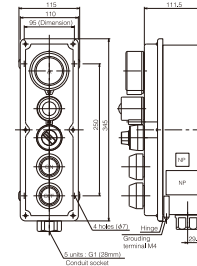
SEIWA

Products conforming to the international standard (IEC Standard 60079)

Combination of 5 units

Type of protection
ExdeIICT5

Degree of Protection
IP 65



Unit arrangement	1		2		3		4	
Connection								
Provision of wiring	no	yes	no	yes	no	yes	no	yes
Wall-mounted type	ZE5AL2P3	ZE5AL2P3W	ZE5AL2S1P2	ZE5AL2S1P2W	ZE5AP5	ZE5AP5W	ZE5AM1L1S1P2	ZE5AM1L1S1P2W
Stand type	ZS5AL2P3	ZS5AL2P3W	ZS5AL2S1P2	ZS5AL2S1P2W	ZS5AP5	ZS5AP5W	ZS5AM1L1S1P2	ZS5AM1L1S1P2W

Unit arrangement	5		6		7		8	
Connection								
Provision of wiring	no	yes	no	yes	no	yes	no	yes
Wall-mounted type	ZE5AM1L2P2	ZE5AM1L2P2W	ZE5AL5	ZE5AL5W	ZE5AS5	ZE5AS5W	ZE5AM1L1P3	ZE5AM1L1P3W
Stand type	ZS5AM1L2P2	ZS5AM1L2P2W	ZS5AL5	ZS5AL5W	ZS5AS5	ZS5AS5W	ZS5AM1L1P3	ZS5AM1L1P3W

Mass : max.3.0kg (ZE5AM1L2P2)

(M).....Ammeter (L).....Pilot lamp (S).....Selector switch (P).....Pushbutton switch (Z).....Buzzer (C).....Cam-operated switch

Unit arrangement	9		10	
Connection	Extra instructions		Extra instructions	
Provision of wiring	no	yes	no	yes
Wall-mounted type	ZE5AM1S1C1	ZE5AM1S1C1W	ZE5AM1L2C1	ZE5AM1L2C1W
Stand type	ZS5AM1S1C1	ZS5AM1S1C1W	ZS5AM1L2C1	ZS5AM1L2C1W

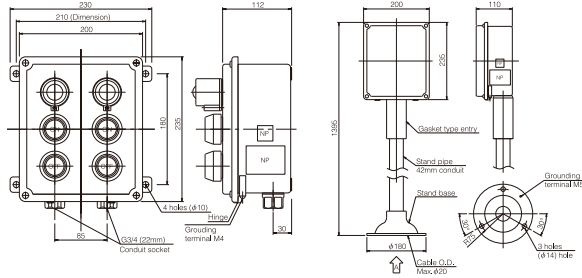
Explosion Proof Type Control Boxes

SEIWA

Products conforming to the international standard (IEC Standard 60079)

Combination of 6 units

Type of protection: ExdeIICT5
Degree of Protection: IP 65



Unit arrangement	1		2		3		4	
Connection								
Provision of wiring	no	yes	no	yes	no	yes	no	yes
Wall-mounted type	ZE6AL6	ZE6AL6W	ZE6AP6	ZE6AP6W	ZE6AL2P4	ZE6AL2P4W	ZE6AS2P4	ZE6AS2P4W
Stand type	ZS6AL6	ZS6AL6W	ZS6AP6	ZS6AP6W	ZS6AL2P4	ZS6AL2P4W	ZS6AS2P4	ZS6AS2P4W
Unit arrangement	5		6		7		8	
Connection			Extra instructions					
Provision of wiring	no	yes	no	yes	no	yes	no	yes
Wall-mounted type	ZE6AL4S2	ZE6AL4S2W	ZE6AM2L2S2	ZE6AM2L2S2W	ZE6AS6	ZE6AS6W	ZE6AM2P4	ZE6AM2P4W
Stand type	ZS6AL4S2	ZS6AL4S2W	ZS6AM2L2S2	ZS6AM2L2S2W	ZS6AS6	ZS6AS6W	ZS6AM2P4	ZS6AM2P4W
Unit arrangement	9		10		11		12	
Connection	Extra instructions		Extra instructions		Extra instructions		Extra instructions	
Provision of wiring	no	yes	no	yes	no	yes	no	yes
Wall-mounted type	ZE6AM2S1P3	ZE6AM2S1P3W	ZE6AL1S1P4	ZE6AL1S1P4W	ZE6AZ1L3P2	ZE6AZ1L3P2W	ZE6AL2S2P2	ZE6AL2S2P2W
Stand type	ZS6AM2S1P3	ZS6AM2S1P3W	ZS6AL1S1P4	ZS6AL1S1P4W	ZS6AZ1L3P2	ZS6AZ1L3P2W	ZS6AL2S2P2	ZS6AL2S2P2W

Mass : max.3.8kg (ZE6AM2L2S2)

(M).....Ammeter (L).....Pilot lamp (S).....Selector switch (P).....Pushbutton switch (Z).....Buzzer (C).....Cam-operated switch

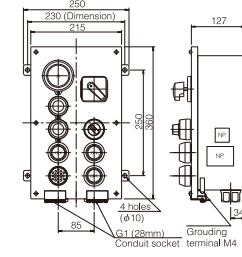
Explosion Proof Type Control Boxes

SEIWA

Products conforming to the international standard (IEC Standard 60079)

Combination of 8 or 10 units

Type of protection: ExdeIICT5
Degree of Protection: IP 65



- If you need a stand type version of the ZEEA series models, consult us.
- Only in the ZEEA series models, coating is applied to both the inside and outside surfaces (melamine resin coating, colour 5Y7/1).

Unit arrangement	1		2		3	
Connection					Extra instructions	
Provision of wiring	no	yes	no	yes	no	yes
Wall-mounted type	ZEAAL4P4	ZEAAL4P4W	ZEAAL2S2P4	ZEAAL2S2P4W	ZEAAM2L2P4	ZEAAM2L2P4W
Unit arrangement	4		5		6	
Connection					Extra instructions	
Provision of wiring	no	yes	no	yes	no	yes
Wall-mounted type	ZEAAL4S2P4	ZEAAL4S2P4W	ZEAAL4P6	ZEAAL4P6W	ZEAAM2L2S2P4	ZEAAM2L2S2P4W

Mass : max.6.9kg (ZEAAM2L2S2P4)

(M).....Ammeter (L).....Pilot lamp (S).....Selector switch (P).....Pushbutton switch (Z).....Buzzer (C).....Cam-operated switch

ZE-ZS

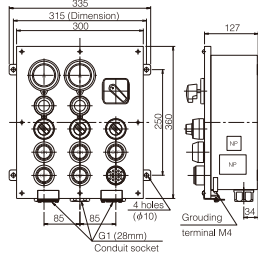
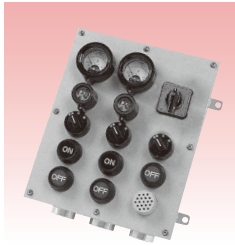
Explosion Proof Type Control Boxes

SEIWA

Products conforming to the international standard (IEC Standard 60079)

Combination of 9 and 12 or 15 units

Type of protection: ExdeIICT5
Degree of Protection: IP 65



- Combination of 24 units (ZECA) is also available upon request.
- If you need a stand type version of the ZEBA and ZECA series models, consult us.
- Only in the ZEBA and ZECA series models, coating is applied to both the inside and outside surfaces (melamine resin coating, colour 5Y7/1).

Combination of 9 Units

Unit arrangement		1		2		3		4
Connection	Extra instructions		Extra instructions		Extra instructions		Extra instructions	
Provision of wiring	no	yes	no	yes	no	yes	no	yes
Wall-mounted type	ZEBAM3L3S3	ZEBAM3L3S3W	ZEBAL3S3P3	ZEBAL3S3P3W	ZEBAL3P6	ZEBAL3P6W	ZEBAM3P6	ZEBAM3P6W

Combination of 12 or 15 Units

Unit arrangement		1		2		3		4
Connection					Extra instructions			
Provision of wiring	no	yes	no	yes	no	yes	no	yes
Wall-mounted type	ZEBAL6P6	ZEBAL6P6W	ZEBAL3S3P6	ZEBAL3S3P6W	ZEBAM2C1L2S2P4Z1	ZEBAM2C1L2S2P4Z1W	ZEBAL6S3P6	ZEBAL6S3P6W

Unit arrangement		5
Connection	Extra instructions	
Provision of wiring	no	yes
Wall-mounted type	ZEBAM3L3S3P6	ZEBAM3L3S3P6W

Mass : max.8.2kg (ZEBAM3L3S3)
Mass : max.9.2kg (ZEBAM3L3S3P6)

(M).....Ammeter (L).....Pilot lamp (S).....Selector switch (P).....Pushbutton switch (Z).....Buzzer (C).....Cam-operated switch

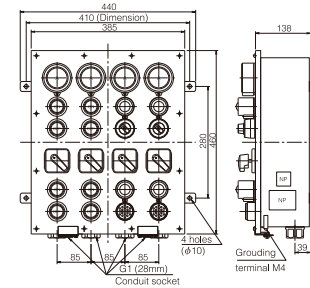
Explosion Proof Type Control Boxes

SEIWA

Products conforming to the international standard (IEC Standard 60079)

Combination of 24 units

Type of protection: ExdeIICT5
Degree of Protection: IP 65



Combination of 24 Units

Unit arrangement		1		2		3		4
Connection	Extra instructions		Extra instructions		Extra instructions		Extra instructions	
Provision of wiring	no	yes	no	yes	no	yes	no	yes
Wall-mounted type	ZECAL8P16	ZECAL8P16W	ZECAL8S4P8	ZECAL8S4P8W	ZECAM3L6C3	ZECAM3L6C3W	ZECAM4PBL4S2ZC4	ZECAM4PBL4S2ZC4W

ZE-ZS